



Te Tohu Rangatira

Year 10 Junior Diploma

9 February 2022

At Papakura High School we strive to demonstrate our value of

COMMITMENT - Manawanui.

We strive for excellence and persevere in the face of challenge.

Every day, when we enter the gates of Papakura High School, we are all expected to show this value.

In Te Reo we say: *Me mate ururoa.*

In Samoan we say: *La tatou tauivi mo mea silisili ma onosai pe'a fegai ma luitau ma faafitauli.*

In Tongan we say: *Oku tau ngaue kihe lelei taha moe kitaki 'ihe fehangaangai moe ngaahi pole 'oe mo'ui.*

Name: _____

Kaitohutohu: _____

Welcome to Year 10 at Papakura High School

This year you will be working towards achieving a Year 10 Graduation Diploma / Te Tohu Rangatira. As you work towards achieving this tohu you will be developing the learning habits and dispositions you need to be successful in school and in employment.

Graduating from Year 10 with a gold, silver or bronze tohu / diploma means that you have demonstrated that you can be successful at Level 1 NCEA.

Te Kahurangi - Poutama & Purapura whetu

This poutama pattern represents the steps you will take to be a successful learner.

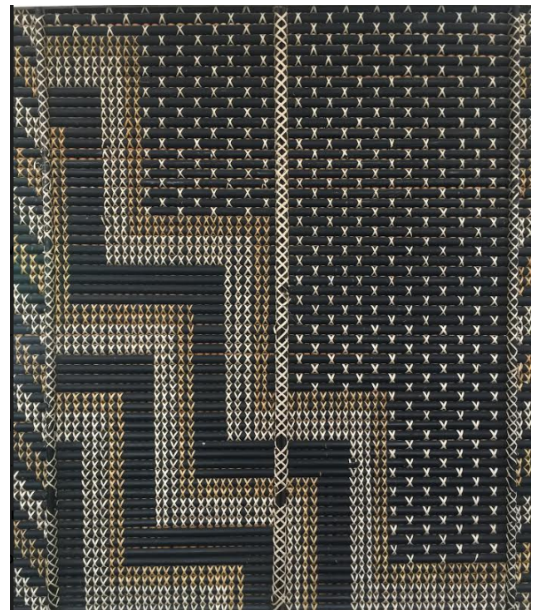
This tukutuku panel from our whare, Te Kahurangi is a combination of 2 designs - Poutama and Purapura whetu.

Poutama

The pillar shows three interpretations of the stepped poutama pattern, signifying the growth of man, striving ever upwards. In meeting houses, the panels are usually mirror imaged so that the steps climb upwards from both sides to reach the summit at the centre.

Purapura Whetu

Purapura whetu (star seeds, or sometimes, star dust) is the Arawa name for a simple cross-stitch pattern that used to be known as pukanohi (herring's eyes) on the East Coast, and kowhiti (to cross) in the Whanganui region. Another form, possibly older, with every space filled with a cross stitch is an Arawa version called Te Mangoroa (the long shark, being the Milky Way). Hiroa said the Whanganui elders believed this was one of the few original designs, but the pattern was abandoned because it was monotonous and the name lost. The term kowhiti was applied to the allover design when alternate light and dark coloured stitches, created an open effect. This form was also known in some regions as roimata tears. One traditional meaning of this pattern is that to survive as an iwi, a hāpu, a whānau, you must have numbers, just as the stars of the Milky Way, otherwise you may be wiped out.



Tohu / Diploma Levels of Achievement

Kia Puawai - Gold: 227 - 284 points (80 – 100%)

Kia Hua - Silver: 184 - 226 points (65 – 79%)

Kia Tupu - Bronze: 156 - 183 points (55 – 64%)

Students with fewer than 156 points will attend a whānau meeting with either the Tumuaki Tuarua / Deputy Principal or Tumuaki / Principal to discuss whether they need to stay in Year 10 for another year or what other options will be available to them.

How do I achieve the Tohu / Diploma?

Every term you will be awarded points. Points are awarded for the following:

- Attendance
- Attitude to Learning
- Learning and achievement in each subject
- Whānau engagement
- Co-curricular participation
- NCEA credits
- Completion and improvement in key assessments

The points you gain each term will be totalled for the year.

What do I need to do?

- Be on time and attend school regularly (all classes and Kaitohutohu/whānau)
- Work hard in your learning, complete all your work and don't give up
- Participate in all school activities
- Do your very best in all things

How do I monitor my progress?

Every three weeks you will reflect on your level of Manawanui in all of your subjects. Your teachers will also do the same. This way you will identify if there are any subjects in which you need to put more effort. Each term you will track your overall progress in your kaitohutohu. You will receive a copy of your points and be able to see where you can make improvements in the next term.

If you do not demonstrate you are on track to pass your tohu each term you are showing us that you might not be ready to graduate into Year 11.

How do I earn the points and who awards them?

Students earn points from:	Points to be entered at the end of every term.	Points awarded by:
Attendance	<ul style="list-style-type: none"> Kia puawai: 95% - 100% attendance for term (4 points), Kia hua: 90% - 94% attendance for term (3 points), Kia tupu: 85% - 89% attendance for term (2 points), He kakano: 80% - 84% attendance for term (1 point), Below 80% for a term - no points awarded. 	Kaitohutohu
Manawanui Commitment "Strive for excellence and persevere in the face of challenge" You have 7 subjects. Every term you can get a maximum of 4 <i>manawanui</i> points in <u>each</u> subject)	<ul style="list-style-type: none"> Kia puawai: (4 points) – consistently strives and perseveres to complete set work Kia hua: (3 points) – usually strives and perseveres to complete set work Kia tupu: (2 points) – commitment to completing set work is inconsistent He kakano: (1 point) – mostly a passive learner – little work completed 	Subject teachers
Learning in each subject (You have 7 subjects. Every term you can get a maximum of 4 <i>learning</i> points in <u>each</u> subject)	<ul style="list-style-type: none"> Kia puawai: (4 points) – consistently demonstrates excellent levels of achievement (above Level 5) Kia hua: (3 points) – mostly demonstrates highly proficient (merit) levels of achievement (At Level 5) Kia tupu: (2 points) – mostly demonstrates proficient levels of achievement (Below Level 5) He kakano: (1 point) – mostly demonstrates low levels of achievement (Well below Level 5) 	Subject Teachers
Engagement in whānau Kia Rangatira	<ul style="list-style-type: none"> Kia puawai: (4 points) – shows leadership and consistently participates in kaitohutohu & whānau activities Kia hua: (3 points) – consistently participates in kaitohutohu & whānau activities Kia tupu: (2 points) - usually participates in kaitohutohu & whānau activities He kakano: (1 point) – attends, but is a passive participant – rarely participates 	Kaitohutohu
Co-curricular participation	<ul style="list-style-type: none"> Kia puawai: (4 points) – fully involved in culture, arts, sport or service. 	Kaitohutohu (and TiC)
NCEA credits (To be calculated in Term 4)	You have the opportunity to complete NCEA credits towards your Level 1 qualification. <ul style="list-style-type: none"> Kia puawai: (4 points) – gain 15 or more NCEA credits Kia hua: (3 points) – gain 10 – 14 NCEA credits Kia tupu: (2 points) – gain 5 – 9 NCEA credits He kakano: (1 point) – gain 2 – 4 NCEA credits 	DP for curriculum
Completion of key assessments	You will have 8 compulsory assessments over the year (PAT/e-asTTle). <ul style="list-style-type: none"> In Term 1 and Term 2 - 1 point will be awarded for each assessment fully completed In Term 4 - 1 point will be awarded for each assessment in which you have made progress. 	Kaitohutohu

Why do my subject teachers give me two lots of points each term?

Each term your subject teachers award points for your learning progress and the level of commitment you show in that subject. Manawanui and achievement go hand in hand. If you score high points for Manawanui in your subjects, you will usually find that your learning progress points are high.

When you combine your Manawanui points and your learning points you will see that you can gain 8 points each term in each subject. That adds up to 56 points.

What happens if I don't achieve the minimum number of points?

If you don't achieve the Year 10 Tohu / Diploma you risk having to repeat Year 10 next year. You and your whānau will need to meet with your Tumuaki Tuarua / Deputy Principal or the Tumuaki / Principal.

At this meeting the Tumuaki Tuarua / Deputy Principal or Tumuaki / Principal will look at your attendance and achievement and make a decision about whether you move to Year 11 or repeat Year 10.

If I get a low number of points in one term, am I able to increase the number of points I earn in the other terms?

Yes. Look at the table on the previous page to see how you earn points each term.

Who can help me be successful?

- Believe in yourself and your ability to be successful.
- Your whānau
- Your teachers
- Your kaitohutohu and kaiarahi
- You could also attend after-school/holiday homework sessions