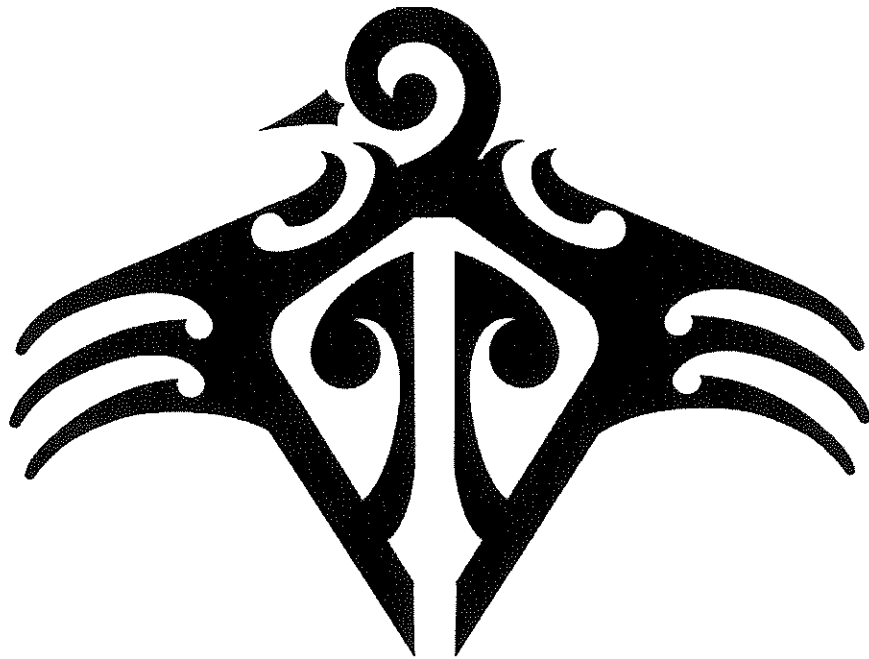


ENROLMENTS



KIA RANGATIRA

PAPAKURA
HIGH SCHOOL

Dear Parent/Caregiver

Greetings, Kia ora, Talofa lava, Malo e lelei, Kia orana, Fakaalofa lahi atu, Namaste.

We invite you to consider Papakura High School as the school for your child's secondary education and would feel privileged to be entrusted with him/her for this important period of education.

Papakura High School has undergone a transformative change in the last five years. Our roll is now well over 900 and we are now able to provide many more opportunities for our students. Our NCEA results are well above averages for similar schools and in 2020 our Level 3 students achieved well above the national average. Our students are displaying our motto 'Kia Rangatira' or 'Becoming leaders' in their learning and extra-curricular activities.

We aim to make the transition from Primary to Secondary as easy as possible and welcome you into our school family. We have a strong focus on pathways at our school, preparing students, either for tertiary study or for employment. We work with businesses and other partners to give our students the best opportunities.

We offer a wide range of activities outside the classroom and we are proud of our success with cultural activities and sports. We have had many representatives in local and national sports teams. I am especially proud of our many ex-students who graduate successfully from University or become successful in their chosen careers.

All students who enrol at Papakura High School are placed into one of our three whānau groups which are the most important part of our school culture. Your child will develop a sense of belonging and loyalty to their whānau, make friends and fully participate in whānau activities and be offered opportunities to become involved in leadership roles in our school as a representative of their whānau.

We aim to prepare your child for tertiary education and employment. Papakura High School is a school within the Kootuitui Trust. This means that your child will be engaged with all their learning at school using a digital device. This will be a Chromebook if he/she is a student in 2022. Children are the centre of teaching and learning and we aim to share with you the journey into making your child a connected, confident, responsible and life-long learner.

Please read through the attached materials and if you have any questions please contact the school on (09) 296 4400.

We hope you give us the opportunity to develop a strong partnership between you, your child and ourselves so that your son or daughter can become proud to be a member of the Papakura High School Community.

Yours faithfully



Simon Craggs
PRINCIPAL



Enrolment Procedure

Our Enrolment Application consists of four parts. Please check carefully that everything is completed and signed as required.

1. Enrolment Application Form
2. Health Form, including immunisation records from health care provider
3. ICT Responsible Use Agreement
4. Birth Certificate or Passport (with visa if applicable)

If your child was born overseas, we will require a copy of the appropriate immigration documentation, e.g. student visa, residency permit etc.

For **in-zone applications**, please include proof of your address.

For **out-of-zone applications**:

If you wish for your child/children to be included in the current/former sibling prioritised category, or children of former students, please provide proof of the relationship.

Please return the required information as stated above to:

The Enrolment Officer
Papakura High School
PO Box 72080
Papakura 2244

If you have any concerns or require further information, please contact:

The enrolment officer
Phone: (09) 295 1508
Email: enrolments@papakurahigh.school.nz

Please note: INCOMPLETE ENROLMENT APPLICATIONS WILL NOT BE PROCESSED



Out of Zone Enrolments

Each year the Board of Trustees will determine the number of places which are likely to be available in the following year for the enrolment of students who live outside the home zone. The Board will publish this information by notice in a daily or community newspaper circulating in the area served by the school. The notice will indicate how applications are to be made and will specify a date by which all applications must be received.

Applications for enrolments will be processed in the following order of priority:

First Priority: applicants enrolling in the Te Mita o Te Reo Māori programme

Second Priority: applicants who are siblings of current students

Third Priority: applicants who are siblings of former students

Fourth Priority: applicant who is a child of a former student of the school

Fifth Priority: applicant who is either a child of an employee of the board of the school or a child of a member of the board of the school

Sixth Priority: all other applicants

If there are more applicants in the second, third, fourth or fifth priority groups than there are places available, selection within the priority group will be by ballot conducted in accordance with instructions by the Secretary under Schedule 20, Section 2, clause 3 of the Education and Training Act 2020.

For the purposes of this clause, child A is the **sibling** of child B if:

- Both children share a common parent; or
- A parent of child A is married to, or in a civil union with, a parent of child B; or
- A parent of child A was married to, or in a civil union with, a parent of child B at the time when child B's parent died; or
- A parent of child A is the de facto partner of a parent of child B; or
- Both children live in the same household and, in recognition of family obligations, are treated by the adults of that household as if they were siblings; or
- The Secretary, by written notice to the school, advises that child A is to be treated as the sibling of child B.

Applicants seeking second or third priority status will be required to give proof of a sibling relationship.



Papakura High School (101) Enrolment Scheme

Effective from Term 1 2022

The guidelines for development and operation of enrolment schemes are issued under Schedule 20 section 4 of the Education and Training Act 2020 (formerly section 11G (3) of the Education Act 1989) for the purpose of describing the basis on which the Secretary's powers in relation to enrolment schemes will be exercised.

Home Zone

All students who live within the home zone described below and/or shown on the attached map shall be entitled to enrol at the school.

Starting at the intersection of Taka Street and the railway line, travel southeast down the railway line until Papakura Station. Then, travel west along Wood Street {SOUTH SIDE ONLY} and then south along Great South Road (even numbered addresses 260 {280} to 468 included), and then travel east until Otūwairoa Stream. Continue traveling east along Otūwairoa Stream and then the southern boundary of Ōpaheke Reserve until the railway line. Then, travel south along the railway line until State Highway 1, and then continue south along SH1 until the intersection of Dale South Road and Hillview Road. From that intersection, travel southeast to Matthew Whitford Drive, and then east to Totara Road (excluded), including Ararimu Road {North side addresses included} to the intersection with Steel Road (excluding Dunn Road). Including Dale, Maxted, Fausett, Turner, and Steel Roads and no exit roads off those roads. Then, travel northwest along Ararimu Road (excluded, but including roads north of the boundary except no exit roads) until Paparimu Road (including north of the intersection). From that intersection, the travel south until Wilson Road (included), Pararimu addresses on eastern side included. From the end of Wilson Road travel east to the Mangatawhiri River (Both sides) Follow the Mangatawhiri River north to the Upper Mangatawhiri Reservoir. Then follow Waterline Road north, continue north following Keeney Road until the intersection with St Pauls Road. Follow St Pauls to the intersection with Plows Road. Follow Plows Road south east until it turns into Mine Road. At the end of Mine Road, travel north to the Orere River (both sides included). Follow the Orere River north to where it meets the Kawakawa-Orere Road (Addresses below 660 and 521 included. (660 and 521 not included). From 660 Kawakawa-Orere Road travel northeast to the coast at the end of Bays Road in the Orere Point Township. Follow the coastline west until North Road at Umupuia Beach. From there, travel southwest along North Road, including both sides of the road, until Clevedon. From Clevedon,



travel south along Papakura-Clevedon Road, including Twilight Road to 103 and below, 102 and below, West Road to 213 and below 210 and below. At intersection of Papakura-Clevedon Road and Clevedon-Takanini Road, head west along Clevedon-Takanini Road (including both sides of roads Parish Line Road) until Alfriston-Ardmore Road. Then, travel west along Airfield Road (both sides of road until Mill Road intersection, then only odd addresses) until Takanini School Road. Travel south on Takanini School Road, and then west on Taka Street (odd addresses only) until the railway line to return to the start of the boundary.

Unless otherwise stated, all residential addresses on boundary roads and no-exit roads off boundary roads are included in the zone.

Proof of residence within the home zone will be required.

Special Programmes

Te Mita o Te Reo Māori – Māori Bilingual Unit (Maximum 150 students)

Out of Zone Enrolments

Out of Zone applications for enrolment will be processed in the following order of priority:

First Priority - will be given to applicants enrolling in the Te Mita o Te Reo Māori programme

Second Priority - will be given to applicants who are siblings of current students

Third Priority - will be given to applicants who are siblings of former students

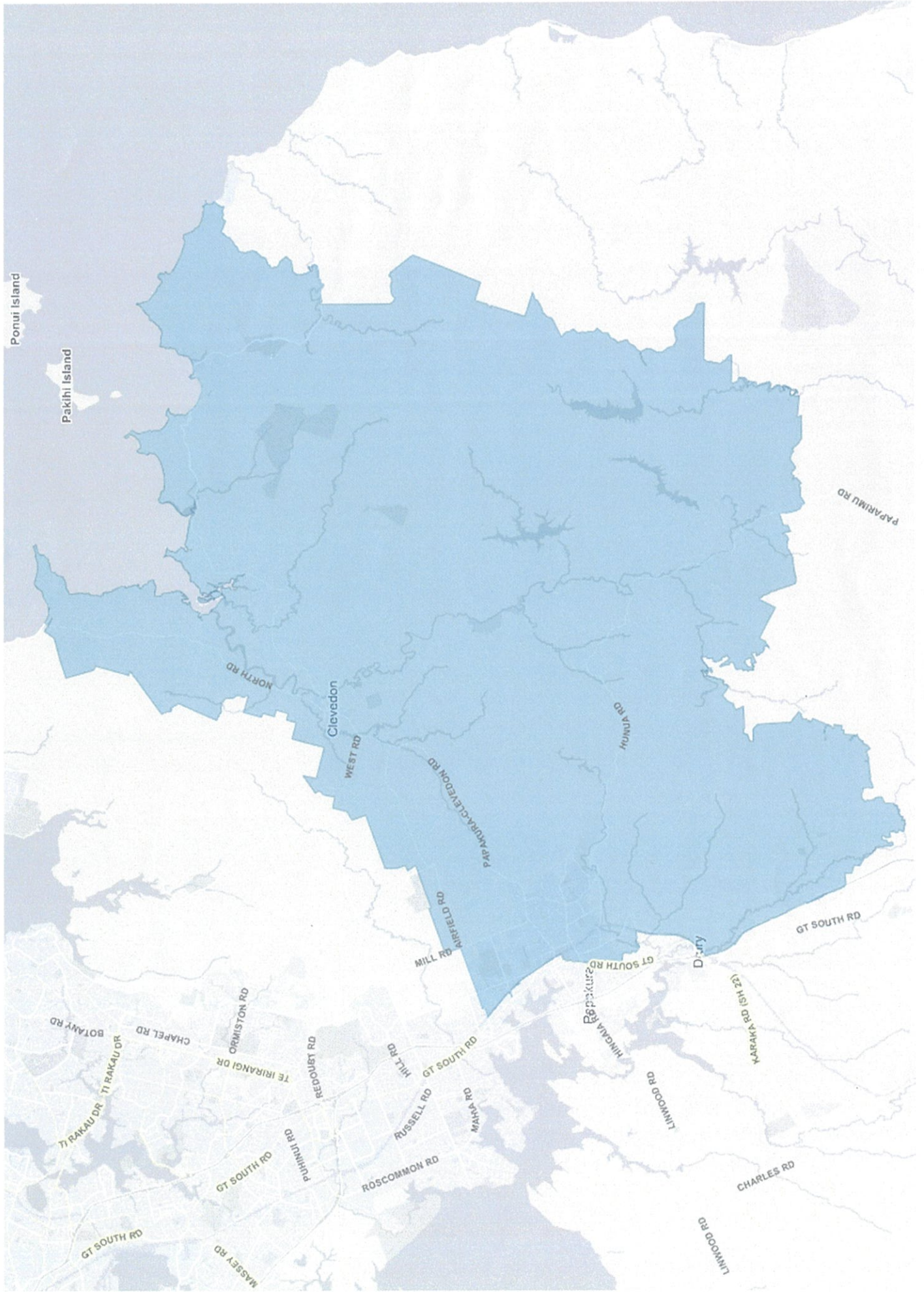
Fourth Priority - will be given to any applicant who is a child of a former student of the school

Fifth Priority - will be given to any applicant who is either a child of an employee of the board of the school or a child of a member of the board of the school

Sixth Priority - will be given to all other applicants

If there are more applicants than there are places available, selection within the priority group will be by a ballot conducted in accordance with instructions issued by the Secretary under Schedule 20 section 9 of the Education and Training Act 2020 (formerly section 11G (3) of the Education Act 1989). Parents will be informed of the date of any ballot by notice in a daily or community newspaper circulating in the area served by the school.

Map of Papakura High School zone – provided by the Ministry of Education



Whānau Groups

Otuuwairoa - Toki

A Toki is a tool used for building and shaping wood. It represents to build and rebuild positive mindsets in our rangatahi and community. The Toki is a symbol of the capability of achieving great things like our tipuna who used this tool to create waka which travelled from hawaiki Nui, Hawaika Roa and Hawaiki Pamamao to Aotearoa covering and mastering the entire Pacific Ocean, the largest mass of open water in the world.

Te Aparangi - Taiaha

The Taiaha is a powerful weapon that represents defence and protection. It has been used to protect people, defend land and strengthening mana. Symbolising the confidence to stand up for what you believe in.

Kirikiri - Ko

Ko is a digging tool used for gardening. It is used to plant seeds that grow food and plants that sustain the hapu/community. It symbolises two meanings; the plentiful land and soil of the rohe and feeding the mind with knowledge that grows inside our rangitahi. This replants these names back into our community.

Waipapa – Hei Matau

Waipapa is the traditional name of the awa (stream) that runs through Papakura into Pahurehure. The hei matau represents the abundance that the awa provided, muna, ika, tuna and huawhenua,

Wakahuia (treasure box) surrounds all four designs



Otuuwairoa



Te Aparangi



Kirikiri



Waipapa



School Values

Our school has four values:

- Manaakitanga - we care for each other's wellbeing / respect & generosity
- Atamai – awareness / knowing / using one's intellectual knowledge
- Ngaa Tuumanako – to aspire to / desire / to wish for
- Aronga – focus / direction

Student Expectations

- School hours are published in January and on the school website. There may be changes to these times to allow for staff professional development.
- Homework is an essential part of the learning process and all students are expected to do homework. The school library is open after school for student research and homework.
- We expect all students to show respect for themselves, for others and for the school. They should always behave in a way which ensures their safety and the safety of others. Courtesy, consideration and common sense should be shown at all times. Students are bound by the school's behaviour policy and school rules on the way to and from school, at school, and when attending or participating in school activities. All students must stay at school all day unless procedures for obtaining a pass are followed.
- Papakura High School will not tolerate violence, harassment, bullying and swearing. We also have strict rules against the use of tobacco, vapes, alcohol or drugs whilst under the jurisdiction of the school and it will be classified as a serious breach of school rules if anyone is found in possession or under the influence of either of these.
- Students who do not follow the school's code of behaviour can expect to have their behaviour addressed by a Kaiārahi. In some instances students may be placed on an individual period by period report which is monitored by both staff and parents. Such reports are intended to help students establish better patterns of work effort, behaviour and attendance. Serious breaches of school rules may result in referral to the Tumuaki/Principal for possible further action.
- Students whose behaviour affects the ability of a class to learn may be removed from those classes. They may be moved to work in another class, in the short term, placed in the learning support centre, or, in the longer term moved to the Activity Centre. This is located off site in Wood Street, Papakura. Students who miss significant amounts of school through unexplained absence may be required to

attend the Alternative Education Te Aoatea class to redo core learning subjects. This class is also based in Wood Street.

- Students are expected to be in the correct school uniform at all times. Details of both Junior and Senior, Boys and Girls uniforms are included in this enrolment pack and uniforms are available at The Uniform Hub, Great South Road, Papakura. Students who wear incorrect uniform must expect that this will be confiscated. It may not be returned until the end of term.
- By law all students must attend school until the age of 16. They are expected to attend regularly and punctually. They must also attend all classes.
- Students arriving late must bring a note signed by their parents. If they arrive after 9am they must sign in at Student Reception and go to normal classes with the signed slip.
- Students are not permitted to go home for lunch and if a student has a dental, medical, or other essential appointment during school time, then the school must be notified prior to the appointment. Students leaving the school grounds to attend authorised appointments must sign out at Student Reception and on their return they must sign back in. No student may leave the grounds during school hours without a school pass.
- All absences must be explained in a written note signed by parents and given to the Kaitohutohu or Attendance Officer immediately after an absence. If it is known that a student is going to be absent for more than two days, parents should notify the school by telephone or text. If a student requires an extended leave of 5 days or more for a non-medical reason, prior approval from the Principal is required.

Personal Digital Devices/Cellphones

- **Students are not permitted to use a personal device at any time during the school day.** Should students bring a device to school, it must be switched off and kept out of sight. If a student breaches this policy, they will be subject to sanctions up to including confiscation of the item.
- Headphones, earbuds and portable speakers are not permitted during class time. Exceptions may be made for students on an Individual Education Plan.

Leaving School

- A Leaving Certificate will be issued on request for students leaving school who are 16 years or older.

Student Travel

- Students are expected to obey traffic regulations at all times.

Bicycles

- Students must wear helmets.
- Bicycles are to be placed in the stands provided.
- Parents are advised to provide a strong chain and padlock for security purposes.

Pedestrians

- Students must take care when crossing Willis and Marne Roads after school. Students must use the pedestrian crossing when crossing Willis Road.
- Students are not to cross the Papakura Intermediate School grounds during school hours.



Curriculum

Papakura High School offers a dynamic and challenging curriculum with a wide range of educational, cultural, sporting and social opportunities. Our core pedagogy is based on a model of 'Learn, Create, Share' with an expectation of students learning in the 21st Century. All programmes use Chromebooks. These devices are a compulsory part of your child's learning equipment. Students are encouraged to set high academic and vocational goals and to develop the desire for life-long learning.

Wednesday Pro-Ject and Electives Programme

Every Wednesday we run a programme on an alternative timetable for all students. These consist of Pro-Jects, which are based on various different career contexts that are chosen by students, and electives, where students are able to pursue different interests. Many of these are run by members of our wider community.

Senior Classes

As an NZQA accredited provider, the school offers students the opportunity to gain national qualifications. We work with MIT and the Trades Academy to offer a range of vocationally based training.

Year 11

Students gain credits towards NCEA Level 1. All students must take Social Studies, English or Te Reo, plus Mathematics and Science, and two other subjects – a total of five courses.

Year 12 and Year 13

Students gain credits towards NCEA Level 2 and 3. There are no compulsory subjects at these levels, although students must meet the prerequisites to be considered for subjects. All students have the opportunity to experience workplace environments whilst gaining additional credits through our Gateway programme. We offer many Tertiary experiences through our Careers Department, smoothing the pathway into further education.

Academic Support

The Learning Centre supports students with individual specific learning needs. Students from overseas may need to study a programme of English as an additional language in our ESOL department. We also have a series of conferences where the focus is placed on the future goals of the student, ensuring that the pathway they are on leads to their desired outcome.

Donations

The board has opted in to the Donations Scheme and does not require parents to make donations, except for school camps if requested.



Junior classes (Year 9 & 10)

To help with the transition from Intermediate school, Year 9 students are kept together as a class for the day. We also have a Transition Programme, Kia Puawai, to promote a sustainable transition into Papakura High School. The priority of Year 10 is to prepare for NCEA Level 1. We also have a Year 10 Diploma, Te Tohu Rangatira. Graduating from Year 10 with a gold, silver or bronze tohu / diploma means that students have demonstrated that they can be successful at Level 1 NCEA. Students remain as one class to study English, Mathematics, Science, Social Studies, Health and Physical Education. They then choose two option subjects to study for the year.

Junior Subjects

Year 9	Year 10
English Mathematics Science Social Studies Physical Education / Health	English Mathematics Science Social Studies Physical Education / Health
	Options
<i>Students will follow the subjects below on a rotational basis.</i> <ul style="list-style-type: none"> ● Art ● Dance ● Digital Technologies ● Drama ● Food Technology ● Hard Materials Technology ● Music ● Second Language (To be confirmed) ● Te Reo Maori 	<ul style="list-style-type: none"> ● Art ● Business ● Dance ● Digital Technologies ● Drama ● Food Technology ● Hard Materials Technology ● Music ● Samoan ● Sports Education ● Te Reo Maori ● Tongan

Subjects in bold are compulsory



Co-curricular

Papakura High School offers many opportunities for students to participate in co-curricular activities.

Sporting Activities include:

Softball, Touch, Volleyball, Waka Ama, Athletics, Basketball, Rugby, Rugby League, Netball, Football, Badminton, Ki O Rahi, E-Sports



Cultural Activities include:

Kapa haka
Samoan, Tongan, Cook Island and
Indian Cultural Groups

Interest Group Activities include:

Performing Arts
Visual Arts
Debate Club
Coding Club
Poetry Club
Film Club



Social Activities Scheme include:

The Annual Senior Ball - organised by the ball committee

Education Outside the Classroom:

Students may attend school camps and experience subject trips and class visits to events and venues off the school property as a part of their learning. Departments organise field trips and other out of class activities in order to fulfil work requirements of the syllabus in subjects such as Geography, Science, Biology, Tourism and Physical Education. Senior Physical Education courses may offer Outdoor Education at Year 12 and Year 13 for those with a strong interest in this area. Year 13 students attend camp and Year 13 prefects also participate in Leadership Training Camps.



Download The Papakura High School App

To download the App Scan the QR code
For access from a compatible Android or iOS mobile device



Alternatively, you can download it from the
play store

SchoolAppsNZ



You can use this to access daily notices, the school portal
as well as newsletters and the school calendar for
upcoming events.

